



## LifeDop™ ABI Vascular System Quick Reference Guide

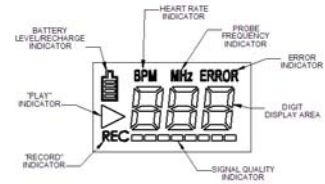
Thank you for choosing the Summit Doppler LifeDop™ 250ABI. We believe you have purchased the finest handheld Doppler and portable printer on the market. This quick reference guide is intended to give basic instructions on the use of your Doppler. Please refer to the User Manual for full instructions and specifications.



**Included in the Packaging** – LifeDop 250ABI, Bi-Directional Probe, Printer with Cable and Printer Recharger, Printer Paper, Gel, Carry Case.

**Obtaining a Waveform** – For the best sounds, angle the probe approximately 45 degrees from the skin surface over the general location of the vessel. Slowly move the probe side to side and vary the angle of the probe until the vascular sounds are heard. Changing the angle of the probe has an affect on the frequency of the sound. The steeper the probe angle is, the higher the frequency of the sound.

**Signal Indicators** – Once flow sounds are found, the signal strength indicators give the user a visual display of the flow direction and relative strength of the signal. Four bars of the left indicate flow toward the probe, while the four bars to the right indicate flow away from the probe. Vary the probe as described above while viewing the indicators to obtain the best results.

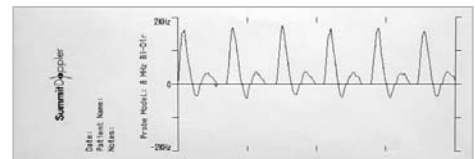


**Buffering a Waveform** – Once the desired flow is found, press the red “PRINT” button on the side of the unit to buffer the PREVIOUS four seconds of flow. When the waveform is buffered, as indicated by “STR” on the display, the probe is temporarily shut off and can be removed from the patient. The printer does not need to be connected to buffer the waveform - the LifeDop will wait until the printer is ready. Note: Only one waveform can be buffered at a time and the LifeDop must remain on in order to retain the waveform.

**Connecting the Printer** – Ensure that the printer is loaded with paper and connect the cable to the printer and LifeDop as shown, with connector tabs down. Turn the printer on by **HOLDING the power button down** until the LED comes on. If the printer is functioning properly and ready to print, the LED will flash green twice every second.



**Printout** – Once the printer is operational and the cables are in place, the LifeDop will automatically download the waveform and printing will begin. If the PRINT button is pressed while the printer is connected and ready, printing will start immediately.



**Report** – Report generation is made very simple with adhesive backed paper provided by Summit Doppler, eliminating cut and paste. The label paper backing is precut down the center – fold the paper down the middle and peel from the center.

**Intended use** – This product is used to detect blood flow in the veins and arteries for assisting in the detection of peripheral vascular disease.

**Warning** – Vascular probes are not intended for fetal use or to be used on or near the eyes. The device is for use on intact skin. Do not plug any part of the device into a telephone or modem system.

Federal law restricts this device to use by or on the order of a physician.

Summit Doppler Systems, Inc.  
5350 Vivian St. Unit A  
Arvada, CO 80002

toll free. (800)554-5090  
phone. (303)423-7572  
fax. (303)940-7165

MAN0008-A